



sonnedix

# POWERING A BRIGHT FUTURE

**Bengrove Solar Farm**  
**March 2024**

# CONTENTS

**01** WHO WE ARE

**02** GLOBAL PRESENCE

**03** MARKET LEADER IN  
ESG

**04** BENGROVE SOLAR  
FARM

# WHO WE ARE

Founded in 2009, Sonnedix is a leading global Renewable Energy Producer with a proven track record in delivering high performance cost competitive renewable energy projects to the market.

- More than 10GW of total capacity across ten countries in three continents, including a pipeline of over 6GW\*
- Strong appetite to expand in OECD countries through development and acquisition
- More than USD 7 billion invested in renewable energy projects globally

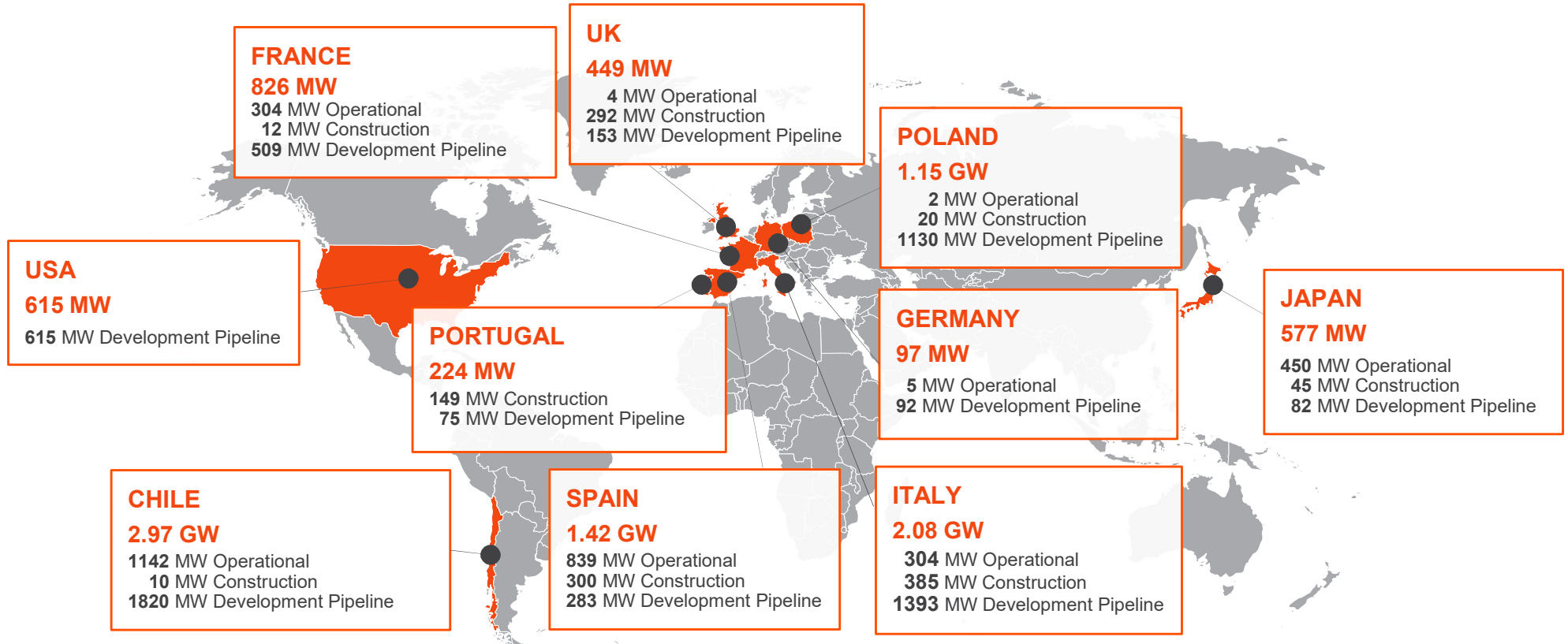
The Sonnedix Group is 99% owned by institutional investors, and the rest by senior management.



# GLOBAL PRESENCE

As of January 2024

				
<b>500+</b> Controlled Projects*	<b>10.42 GW</b> Total Capacity	<b>3.05 GW</b> Operational	<b>1.21 GW</b> Construction	<b>6.15 GW</b> Development Pipeline



\* Controlled Projects: Number of projects in operation, construction, and development, excluding our Greenfield Development pipeline

# MARKET LEADER IN ESG

A positive impact on our people, environments, and communities within which we work

Growing sustainably and ensuring our employees and partners are committed to integrity in action, fairness in conduct and respect for all.

[Read our 2022 Sustainability Report](#)



**G R E S B**  
INFRASTRUCTURE  
sector leader 2023

Our efforts have had an impact with GRESB (Global Real Estate Sustainability Benchmark), an independent, investor-driven organisation, committed to assessing the ESG performance of real assets globally, awarding Sonnedix Infrastructure Sector Leader for 2023.

## Our ESG Policies



### Environmental

Protect, enhance and care for the environments where we build and operate our solar plants.



### Social

Support the communities we work in with social and developmental activities, job opportunities and essential provisions.



### Governance

Ensure our employees and partners are committed to integrity in action, fairness in conduct and respect for all.



# BENGROVE SOLAR FARM

## INTRODUCTION

Resubmitted in January 2024

Project objectives:

- Support net-zero by 2050 and interim target of a 78% reduction by 2035.
- Solution to climate emergency declared by Government and Tewkesbury in 2019.
- Help address rising energy costs and fuel poverty by replacing fossil fuel energy with renewable energy.
- Enable the continuation of agricultural use on the land.
- Significantly increase the biodiversity of the site and support the ecological assets of the surrounding area.



# BENGROVE SOLAR FARM

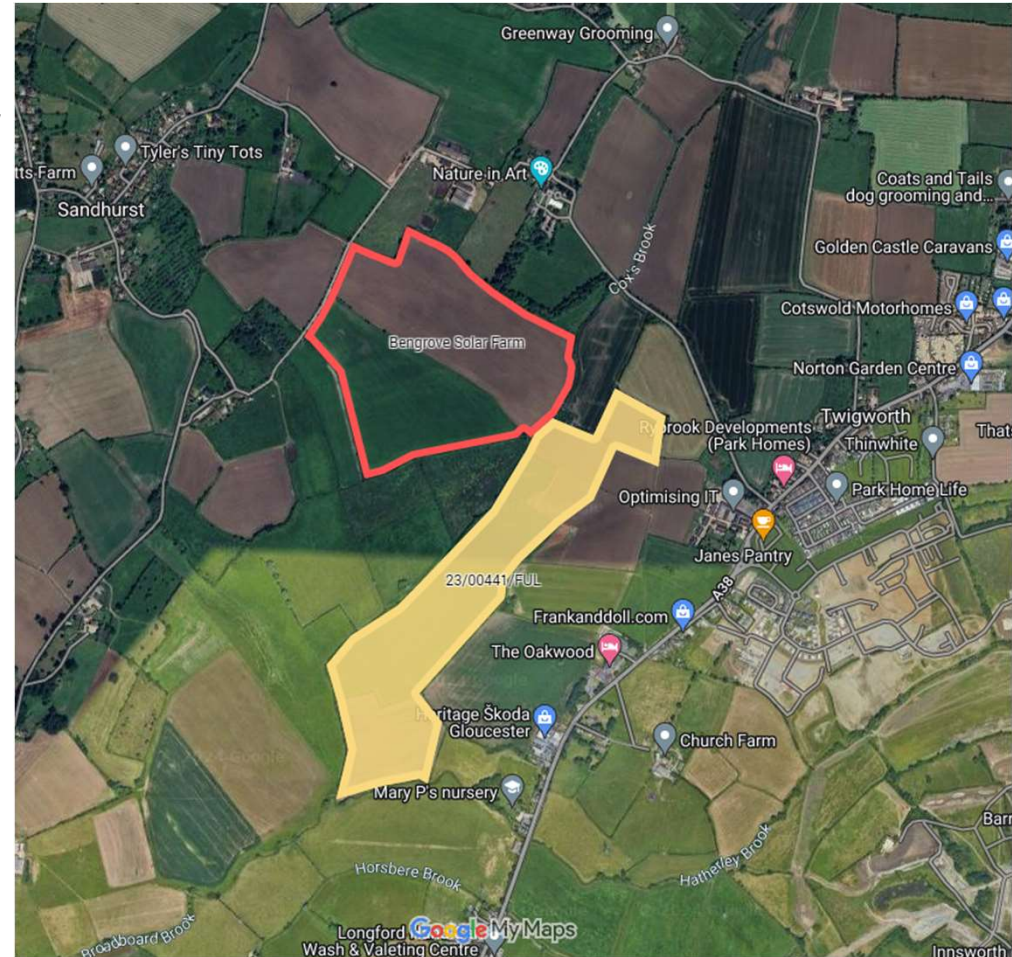
## SITE LOCATION AND OVERVIEW

Site shown in red

New access, relocated habitat and minor layout changes

- 15 MW export capacity
- Over 5,500 homes per year
- 8,900 tonnes CO<sub>2</sub> saved per year

Solar only, NO BATTERY (BESS)



Site location and overview

# BENGROVE SOLAR FARM

## SITE SELECTION AND GRID CONNECTION

Grid is key – capacity on 33kV Castle Meads circuit

Connection from site to existing NGED-owned pylon via underground cable

We considered:

- Landscape and visibility
- Listed buildings
- Flood risk
- Agricultural land grade
- Access
- Ecology



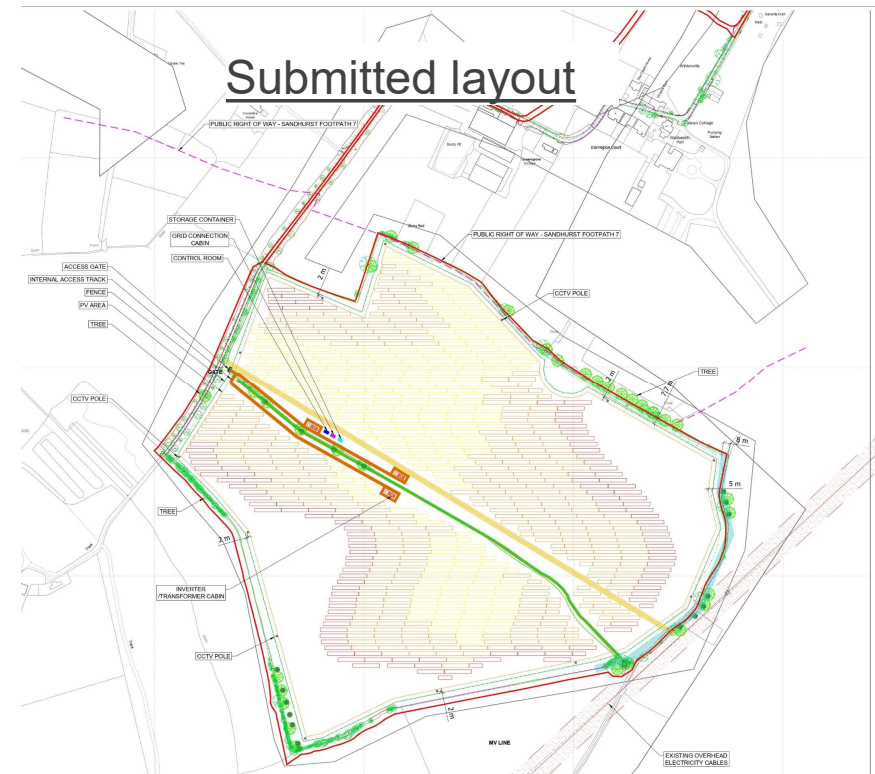


# BENGROVE SOLAR FARM

## SITE LAYOUT, EVOLUTION AND FLOOD RISK

1. Development removed from areas at most risk of flooding
2. Some panels raised
3. Environment Agency consider the scheme design to be best practice

Early iteration



# BENGROVE SOLAR FARM

## SITE ACCESS

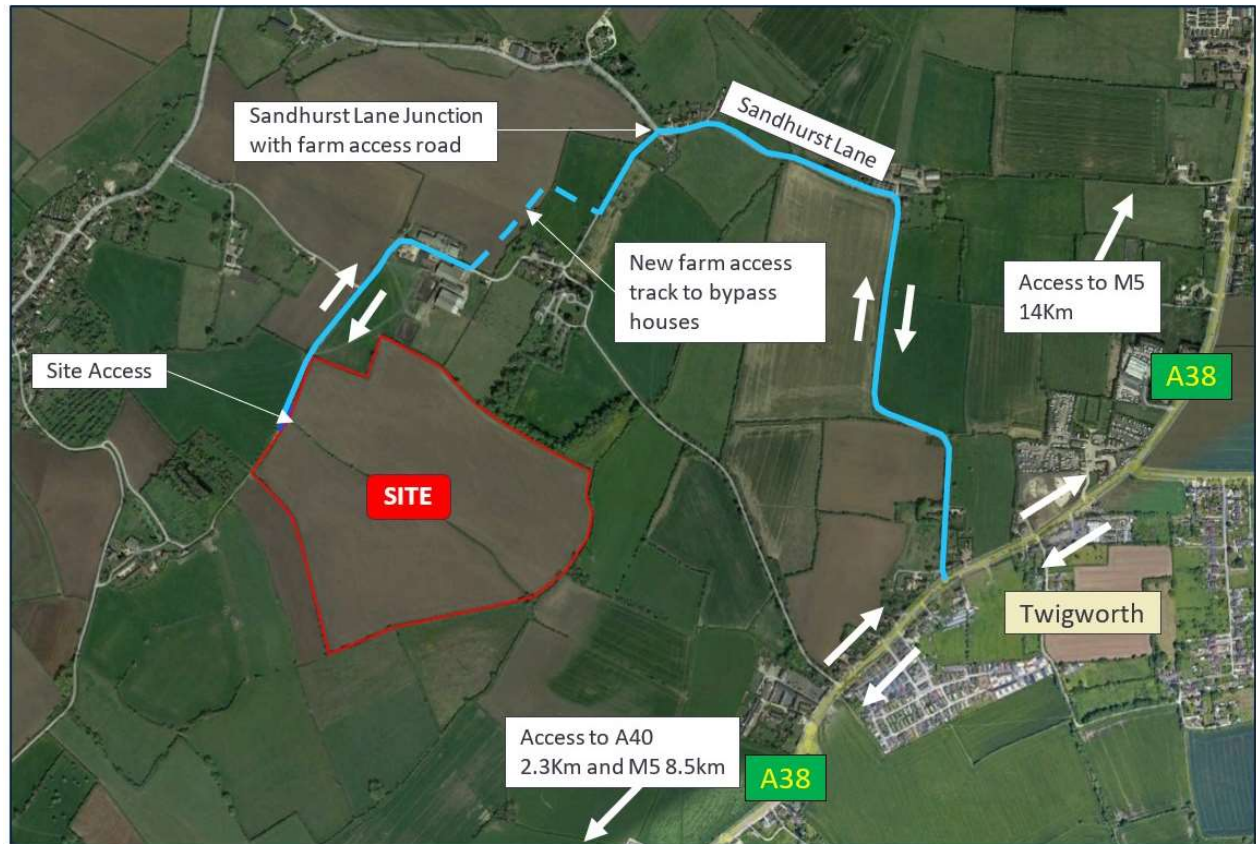
Almost no traffic in operation

Various access options considered - Sandhurst Lane with new access arrangements to bypass houses

Construction 26 weeks – average 3 HGVs per day (4 at peak times)

Construction traffic management plan condition

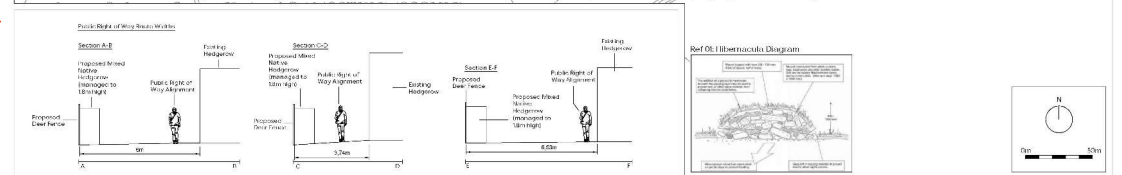
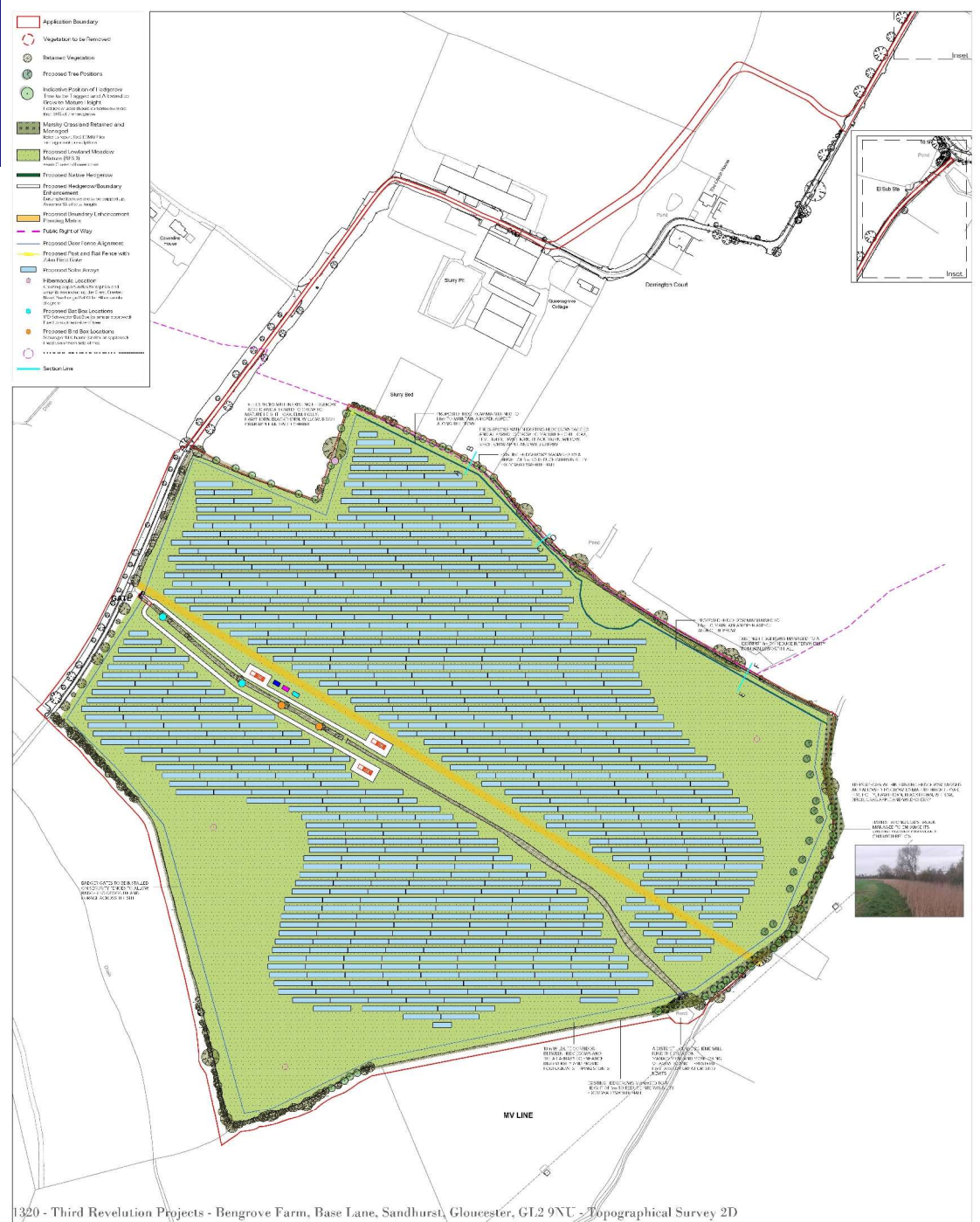
- Marshalls on road
- Avoid peak times



# BENGROVE SOLAR FARM

## Landscaping, enhancements and mitigation

- Trees and hedgerows retained with minimal removal for access
- New hedges and trees
- New species rich grassland
- Ecological habitats
- Biodiversity net gain: around 126% habitat; 31% hedgerow and over 11% river units
- Designed for sheep grazing
- Footpath will remain open
- Gates for small mammals
- Bird and bat boxes



# VIEW FROM PUBLIC FOOTPATH ESA7 LOOKING SOUTH EAST



**Existing view**



**Day 1 view**



**Mature view**



# VIEW FROM WALLSWORTH HALL PRIVATE DRIVE



**Existing view**



**Day 1 view**



**Mature view**



# BENGROVE SOLAR FARM

## NEXT STEPS

- **Application reference: 24/00050/FUL**
- **Public consultation run by Tewkesbury**
- **Decision due in April 2024**



UK

Sonnedix Grove Farm, 4MW

Acquired in 2014



**GUILLERMO FERNANDEZ, DEVELOPMENT MANAGER**

**PHONE: 07743983712**

**EMAIL: [GUILLERMO.FERNANDEZ@SONNEDIX.COM](mailto:GUILLERMO.FERNANDEZ@SONNEDIX.COM)**

**[SONNEDIX.COM](http://SONNEDIX.COM)**